



DEC 29 2017

TECHNICAL BULLETIN
NO.2017 - 18

SUBJECT : ADOPTING THE USER MANUAL AND THE MAP TEMPLATE OF SOCIO-ECONOMIC ASSESSMENT AND MONITORING SYSTEM (SEAMS) FOR PROTECTED AREAS

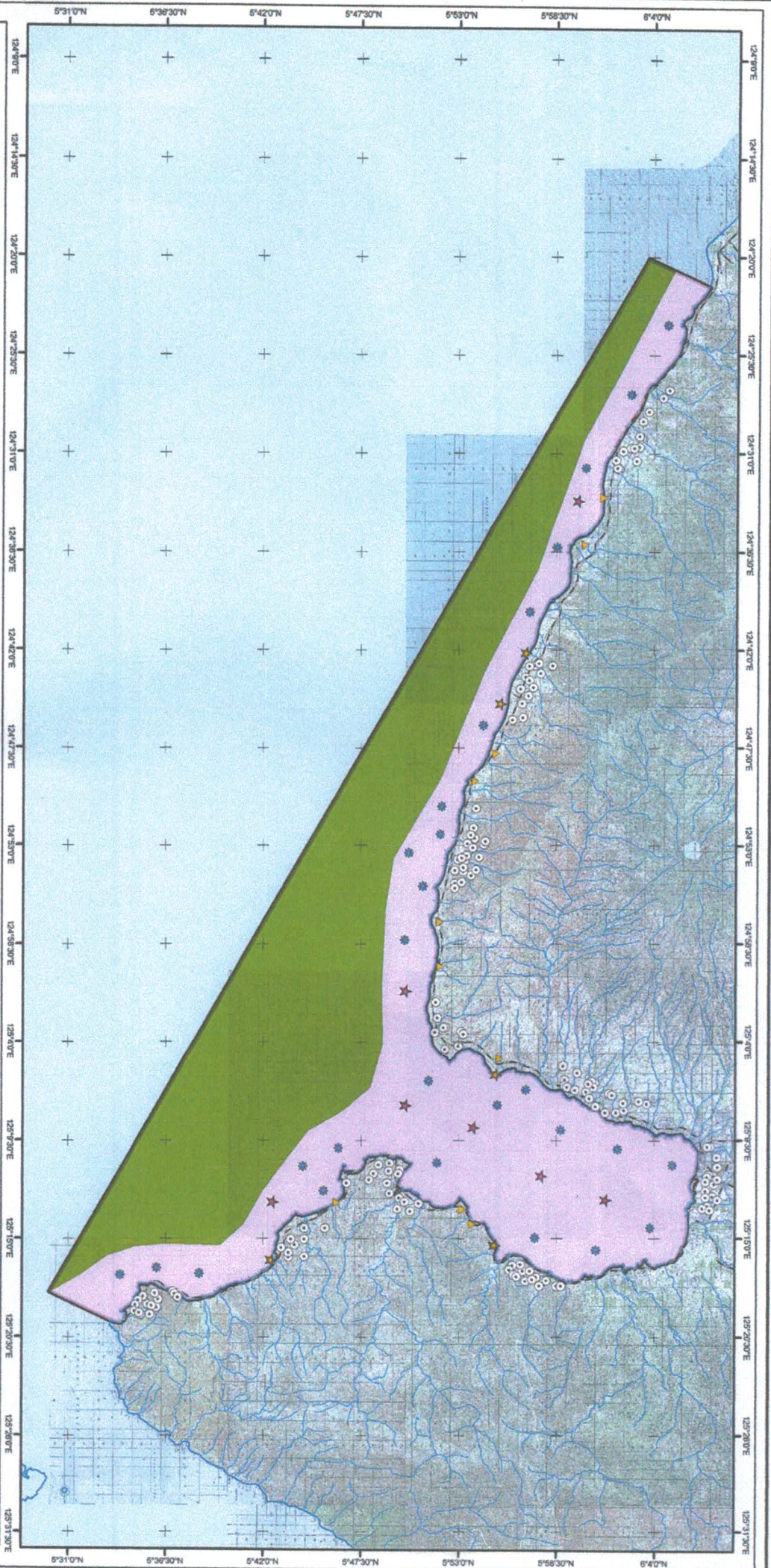
Further to the issuance of the Biodiversity Management Bureau – Technical Bulletin (BMB-TB) No. 2016-06 re: *Guidelines on Socio-Economic Assessment and Monitoring System for Protected Areas*, the attached User Manual and Map Template are hereby adopted to supplement the said Guidelines.

This TB also clarifies that for the SEAMS Team Composition, in cases where the Provincial Environment and Natural Resources Officer (PENRO) is the concurrent PASu, the PENRO/PASu will act as the head of the Team, provided that, the CDD Chief will still sit as member and facilitate the conduct of the activity including the determination of appropriate management interventions as a result of the SEAMS.

All other provisions of the BMB – TB No. 2016-06 shall remain in force.

This Technical Bulletin shall take effect immediately and shall be circulated for the information and guidance of all concerned.


THERESA MUNDITA S. LIM
Director



LOCATION OF HOUSEHOLDS AND RESOURCE USES WITHIN THE SARANGANI BAY PROTECTED SEASCAPE



Projection : UTM Luzon
Scale 1:400,000
0 0.5 1 2 3 4
Kilometers

LOCATION:
Maitum, Kamda, Maasin, Sarangani

SOURCES OF INFORMATION:
NAARRIA-DENR
BMB-DENR

TOPO MAP USED:
4036-II Abbel
4137-III Tabuyan
4137-IV Caburan
4036-III Gen. Santos City
3836-II Maitum
3836-III Parker Volcano
3837-I Lumiyon

4036-I Mague Grande
4037-I Burias
3837-IV Kamda
4036-IV Maasin
4037-IV Maasin
4138-I Malapitan
4138-III Kalan
4037-III Kalan

LEGEND:

Protected Area
Strict Protection Zones
Multiple Use Zones

Road Network
River System
Municipal Boundary
Household Lots

Resource Uses

Farm Lots/Agriculture:
Crop Production
Less than 500 sq.m.
500 sq.m. to 1ha.
1ha. to 3has.
3has. and Above

Livestock Production
Less than 500 sq.m.
500 sq.m. to 1ha.
1ha. to 3has.
3has. and Above

Fishery

Fresh Water
Salt Water

Forestry

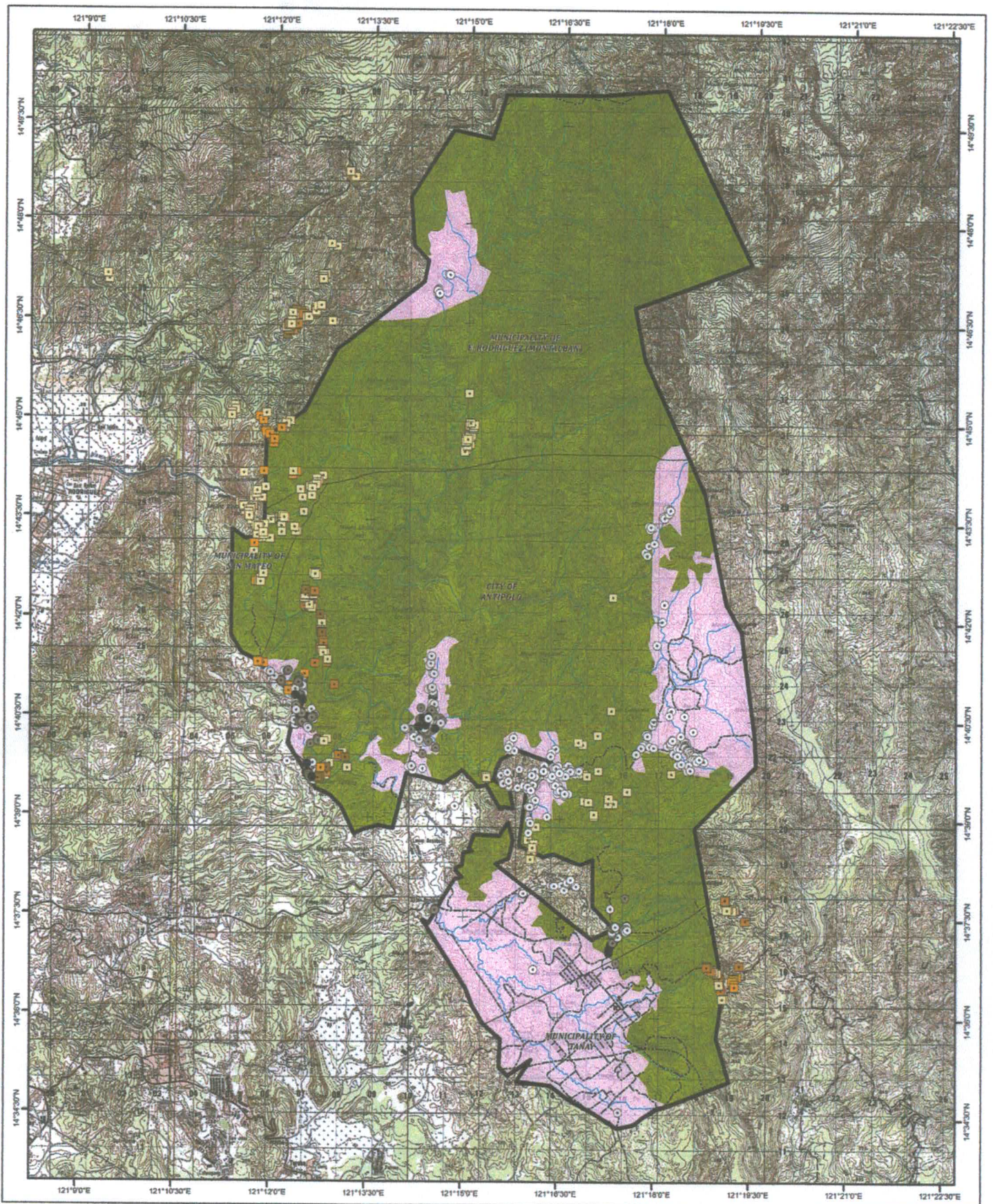
Timber Products
Non-Timber Products

Ecotourism
Trekking/Hiking
Boating/Kayaking
Camping
Bird Watching
Caving/Spelunking
Swimming/Snorkeling/Diving

Wildlife Collection and Use

Trading, Processing and Manufacturing
Mining and Quarrying

PREPARED BY:
National Parks Division
Biodiversity Management Bureau
Department of Environment and Natural Resources



<p style="text-align: center;"> MAP SHOWING THE HOUSEHOLD & FARMLOT WITHIN UPPER MARIKINA RIVER BASIN PROTECTED LANDSCAPE Projection : UTM Luzon, Datum, Zone 51 Scale 1:100,000 Kilometers </p>	<p>LOCATION: Antipolo City; Baras, Rodriguez, San Mateo and Tanay, Rizal</p> <p>SOURCES OF INFORMATION: NAMRIA-DENR BMB-DENR</p> <p>TOPO MAP USED: 7272-IV Angat 7272-III Quezon City 7272-II Baras 7272-I Mount Irid</p>	<p>LEGEND:</p> <table border="0"> <tr> <td> Protected Area</td> <td> Road Network</td> </tr> <tr> <td> Strict Protection Zones</td> <td> River System</td> </tr> <tr> <td> Multiple Use Zones</td> <td> Municipal Boundary</td> </tr> </table> <table border="0"> <tr> <td>Household Lots</td> <td>Farm Lots</td> </tr> <tr> <td> 1-3 Members</td> <td> Less than 500 sq.m.</td> </tr> <tr> <td> 4-6 Members</td> <td> 500 sq.m. to 1Ha.</td> </tr> <tr> <td> 7-10 Members</td> <td> 1Ha. to 3Has.</td> </tr> <tr> <td> 10 Members and Above</td> <td> 3Has. and Above</td> </tr> </table>	Protected Area	Road Network	Strict Protection Zones	River System	Multiple Use Zones	Municipal Boundary	Household Lots	Farm Lots	1-3 Members	Less than 500 sq.m.	4-6 Members	500 sq.m. to 1Ha.	7-10 Members	1Ha. to 3Has.	10 Members and Above	3Has. and Above
Protected Area	Road Network																	
Strict Protection Zones	River System																	
Multiple Use Zones	Municipal Boundary																	
Household Lots	Farm Lots																	
1-3 Members	Less than 500 sq.m.																	
4-6 Members	500 sq.m. to 1Ha.																	
7-10 Members	1Ha. to 3Has.																	
10 Members and Above	3Has. and Above																	



**RELATIVE
LOCATION OF HOUSEHOLDS
AND RESOURCE USES WITHIN
THE UPPER MARIKINA RIVER
BASIN PROTECTED LANDSCAPE**

Projection : UTM Luzon
Scale 1:100,000
0 0.5 1 2 3 4
Kilometers

LOCATION:

Antipolo City, Baras, Rodriguez,
San Mateo and Tanay, Rizal

**SOURCES OF
INFORMATION:**

NAMRIA-DENR
BMB-DENR

TOPO MAP USED:

7272-IV Angat
7272-III Quezon City
7272-II Baras
7272-I Mount Irid

LEGEND:

- Protected Area
- Strict Protection Zones
- Multiple Use Zones
- Road Network
- River System
- Municipal Boundary
- Household Lots

Resource Uses

Farm Lots/Agriculture:

Crop Production

- Less than 500 sq.m.
- 500 sq.m. to 1Ha.
- 1Ha. to 3Has.
- 3Has. and Above

Livestock Production

- Less than 500 sq.m.
- 500 sq.m. to 1Ha.
- 1Ha. to 3Has.
- 3Has. and Above

Fishery

- Fresh Water
- Salt Water

Forestry

- Timber Products
- Non-Timber Products

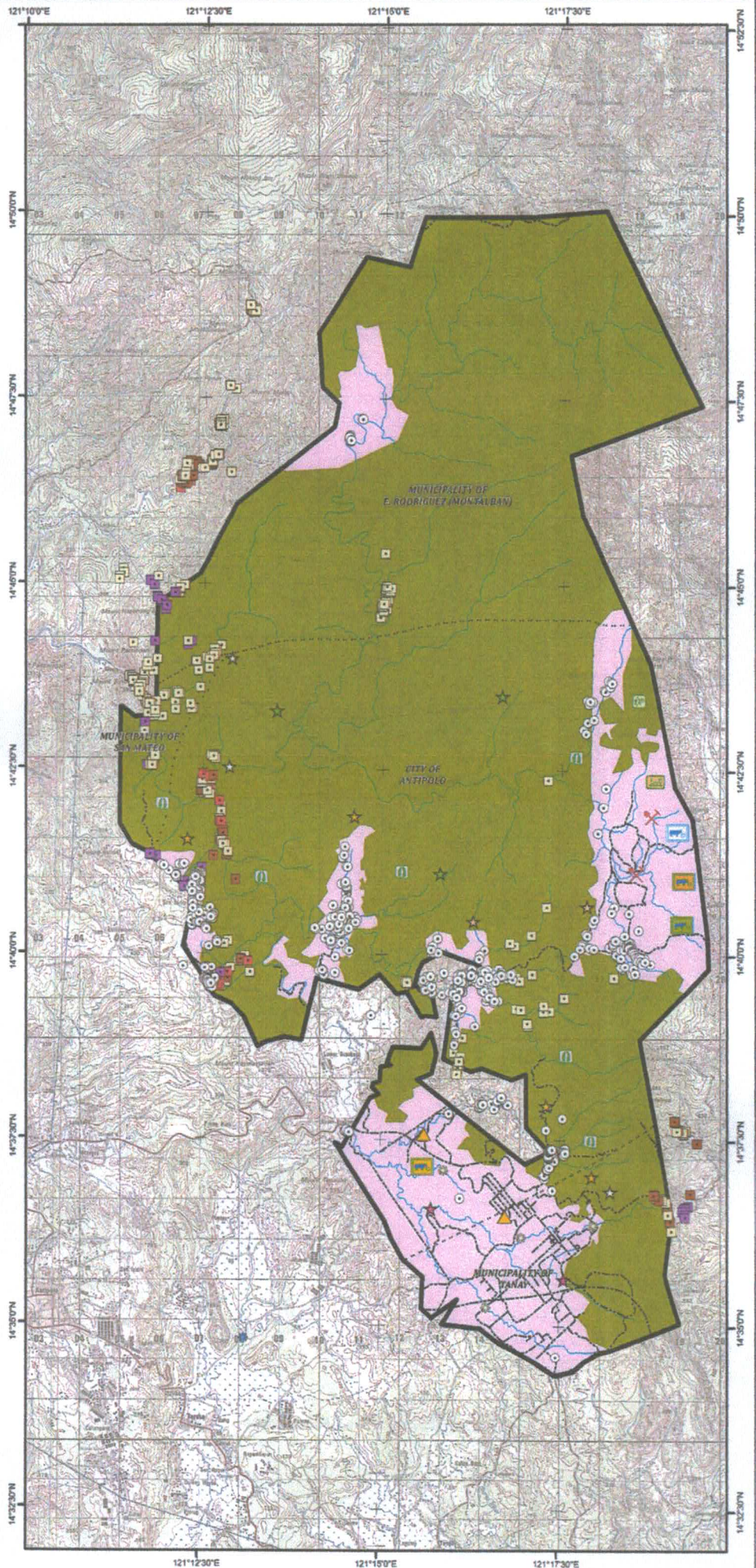
Ecotourism

- Trekking/Hiking
- Boating/Kayaking
- Camping
- Bird Watching
- Caving/Spelunking
- Swimming/Snorkeling/Diving

- Wildlife Collection and Use
- Trading, Processing and Manufacturing
- Mining and Quarrying

PREPARED BY:

National Parks Division
Biodiversity Management Bureau
Department of Environment and Natural Resources





Republic of the Philippines
Department of Environment and Natural Resources
BIODIVERSITY MANAGEMENT BUREAU
Ninoy Aquino Parks and Wildlife Center
Quezon Avenue, Diliman, Quezon City
Tel. Nos.: (632) 924-6031 to 35 Fax: (632) 924-0109, (632) 920-4417
Website: <http://www.bmb.gov.ph> E-mail: bmb@bmb.gov.ph

SEP 15 2017

MEMORANDUM

FOR : The Regional Directors
DENR-Regions I-XIII & CAR

THRU : The Assistant Regional Director for Technical Services

FROM : The Director

SUBJECT : **STANDARD MAP FOR THE SOCIO-ECONOMIC
ASSESSMENT AND MONITORING SYSTEM (SEAMS)
REPORTS OF PROTECTED AREAS**

This is with regard to the preparation of SEAMS reports, specifically the GIS maps showing the relative location of the households and the resource uses within protected area. It should be noted that the technical staff of the DENR Regional/field Offices who participated in the SEAMS orientation on 8-12 May 2017 have requested a standard format for the preparation of maps for the SEAMS.

In this regard, we are providing the attached template of the map to be included in the SEAMS report for purposes of uniform presentation and for easier identification of the location of households and resource uses in protected areas. Please take note, however, that only the actual resource uses should be reflected in the legend.

For information and guidance of the concerned officers and technical staff.

THERESA MUNDITA S. LIM

